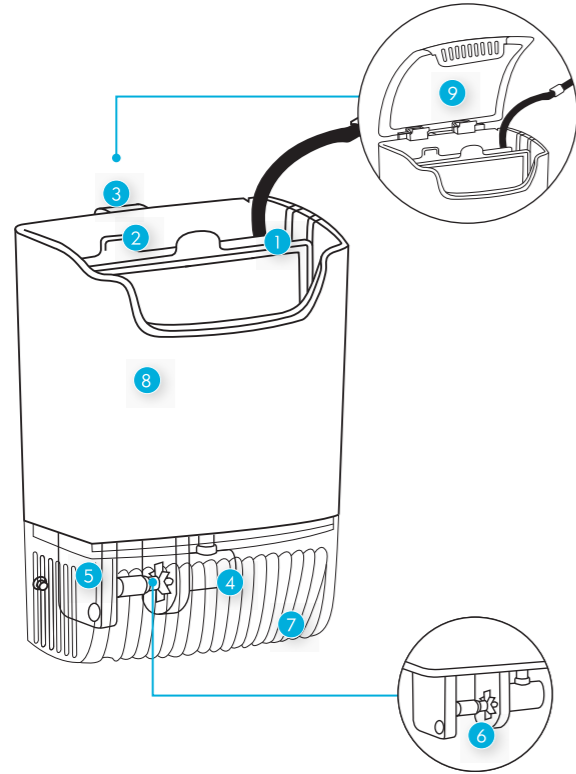


GETTING TO KNOW YOUR INTERNAL POWER FILTER



Part No.	Part Description
1	Life Flow Cartridge (In Cartridge Pack)
2	Ceramic Media Cartridge
3	Locator Hook
4	Pump Inlet Cover and Pipe
5	Pump Motor
6	Pump Impellor
7	Intake Cage
8	Filter Body
9	Filter Cover

Part No.	Part Description	Spares Code
1	Life Flow Cartridge (In Cartridge Pack)	Single: 70103 Triple: 70104
2	Annual Replacement Impellor	70128

QUESTIONS OR SPARE PARTS, VISIT www.interpetlife.com

TROUBLESHOOTING

Problem 1: Filter flow rate drops considerably

Solution 1: Check for dirt and debris around the clip on intake cage (7) and the inlet pipe (4) and remove. If this does not resolve the flow rate problem, check the impellor (see problem 2).

Solution 2: The cartridge filter design is specifically built around easy access to replace the filter cartridges, this means the outflow is powered by gravity which can appear to be slower than other internal power filters. In reality the life flow filter range delivers the same if not more flow than conventional internal power filters.

Problem 2: Filter is noisy

Solution 1: The impellor (6) should be removed and carefully cleaned, see three monthly care routine. Once the impellor has been cleaned it should be inspected for any damage. If the impellor or magnet is damaged in any way, the impellor should be replaced.

Solution 2: To minimise vibration noise when using the locator hook (3), which is used to hang the filter directly on to the top edge of the aquarium, remove the bottom two suckers and replace with the supplied vibration dampers (4). See part checks section 2.

Problem 3: Power cut

Solution: Any interruption of more than 2-3 hours of the water supply through the filter will cause the bacteria in the filter to die. Should this occur, do not simply re-start the filter. You must thoroughly clean ALL the filter material and start the filter again. In an aquarium fully stocked with fish, this may lead to water quality problems. Use test kits to monitor water, use Ammonia Remover products to manage the water quality.

Problem 4: Water will not stay crystal clear

Solution 1: Check to ensure the cartridge filter is working correctly, inspect the life flow cartridge (1) to see it is correctly positioned in the key locator and also if it was replaced monthly (if not it must be replaced).

Solution 2: Use Interpet Quick Clear which clumps together the fine particles and allows them to be removed more effectively by the filter. Additionally cut down on feeding levels for two to three days and ensure you perform monthly water changes.

Solution 3: Ensure aquarium is not overstocked see interpetlife.com for more details.

Problem 5: Filter flow runs over the top of the filter cartridge prematurely

Solution 1: The cartridge filter must be positioned in the aquarium no higher than the 'Max water line' located on the front of the filter body, see section 3. This ensures sufficient head height for water flow to pass through a new filter cartridge (1) before it becomes blocked by dirt and debris and needs replacing approximately once a month.

Solution 2: (Solution 1 from problem 4)

WARRANTY

Interpet Limited warrants this product against defects in materials or workmanship for a period of 12 months from the date of original purchase. The warranty covers only any defects caused during normal use and operation of the filter, in accordance with the instructions enclosed.

If the product exhibits such a defect, Interpet Limited will repair or replace it without cost for parts or labour. The product must be shipped post-paid to Interpet Limited. Proof of purchase is required. This warranty does not apply to problems or damage caused by unauthorised modifications, misuse, improper or inadequate maintenance, accidents, or operations outside the product instructions or specifications.

All implied warranties, including any implied warranty of merchantability or fitness for any purpose, are limited to 12 months from date of original purchase.

The warranty service includes repair or replacement of the filter at Interpet Limited discretion. In no event shall Interpet or the manufacturer be liable for any direct, indirect, special, incidental or consequential damages, including loss of livestock, arising from a defect in this product.

Some states do not allow the exclusion or limitation of incidental or consequential damages, so the above limitation may not apply to you if you purchased the product in one of those states. This warranty provides specific legal rights. You may have other legal rights that vary from state to state.

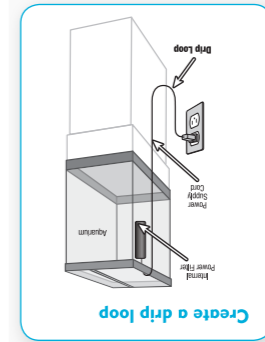
Questions or need spare parts, please visit www.interpetlife.com

SAVE THESE INSTRUCTIONS

11. If this appliance has a polarised plug (one blade is wider than the other) as a safety feature, this plug will fit in a polarised outlet only one way. If the plug does not fit fully in the outlet, reverse the plug. If it still does not fit, contact a qualified electrician. Never use with an extension cord unless plug can be fully inserted. Do not attempt to defeat this safety feature.

ONLY FOR POLARISED ATTACHMENT PLUG APPLIANCES

1. Read and observe all the important notices on the appliances.
2. Make sure an appliance mounted on a tank is securely installed before operating it.
3. Do not install or store the appliance where it will be exposed to the weather or to temperatures below freezing.
4. Do not use an appliance for other than intended use. The use of attachments not recommended or sold by the appliance manufacturer may cause an unsafe condition.
5. Always unplug an appliance from the outlet when not in use, before putting on or taking off parts, and before cleaning. Never yank the cord to pull plug from the outlet. Grasp the plug and pull to disconnect.
6. To avoid injury, do not contact moving parts or hot parts such as heaters, reflectors, lamp bulbs, etc.
7. Close supervision is necessary when any appliance is used by or near children.
8. the circuit breaker that supplies power to the appliance. Then unplug the receptacles do get wet, DON'T unplug the cord. Disconnect the fuse to
9. damaged cord or plug, or if it malfunctioning
10. To avoid the possibility of the appliance plug or receptacle getting wet, position aquarium stand and tank to one side of the wall mounted receptacle to prevent water from dripping onto the receptacle or plug. As shown in the figure below, a "drip loop" should be arranged by the user for each cord connecting an aquarium appliance to the receptacle. The "drip loop" is the part of the cord below the level of the receptacle, or the connector if an extension cord is used, to prevent water travel along the cord and coming in contact with the receptacle. If the plug or the



1. **READ AND FOLLOW ALL SAFETY INSTRUCTIONS**
 2. **DANGER** - To avoid possible electric shock, special care should be taken since water is employed in the use of aquarium equipment. For each of the following situations, do not attempt to repair yourself; return the appliance to an authorised service facility for service or discard the appliance.
 3. Do not operate any appliance if it has a damaged cord or plug, or if it malfunctioning or if it is dropped or damaged in any manner.
 4. Carefully examine the appliance after installation. It should not be plugged in if there is water on the parts not intended to be wet.
 5. Immediately unplug it from the power source.
 6. If the appliance shows any sign of abnormal water leakage, service or discard the appliance.
 7. If the appliance shows any sign of abnormal water leakage, immediately unplug it from the power source.
- WARNING** - To guard against injury, basic safety precautions should be observed including the following:

IMPORTANT SAFEGUARDS



Interpet has applied over 60 years of aquatic experience to ensure every element of the design of this product has been carefully considered to help you enjoy aquarium keeping.

844-660-FISH (3474)

Interpet Ltd. Vincent Lane, Dorking, Surrey RH4 3YX, UK

www.interpetlife.com

Version 0001



LIFE FLOW Internal Power Filter

Instruction sheet & quick start up guide



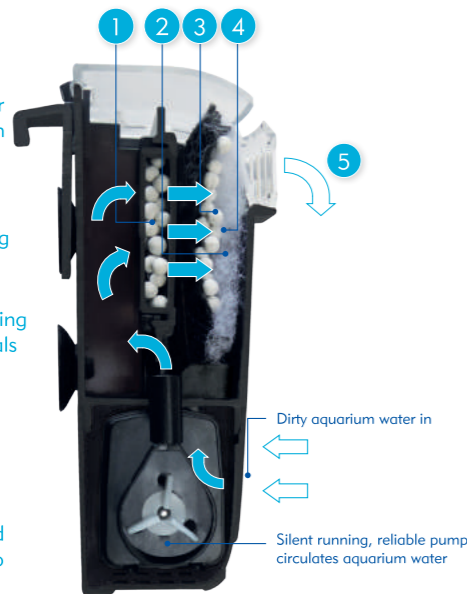
FOR CRYSTAL CLEAR WATER

1. WHY I NEED A FILTER

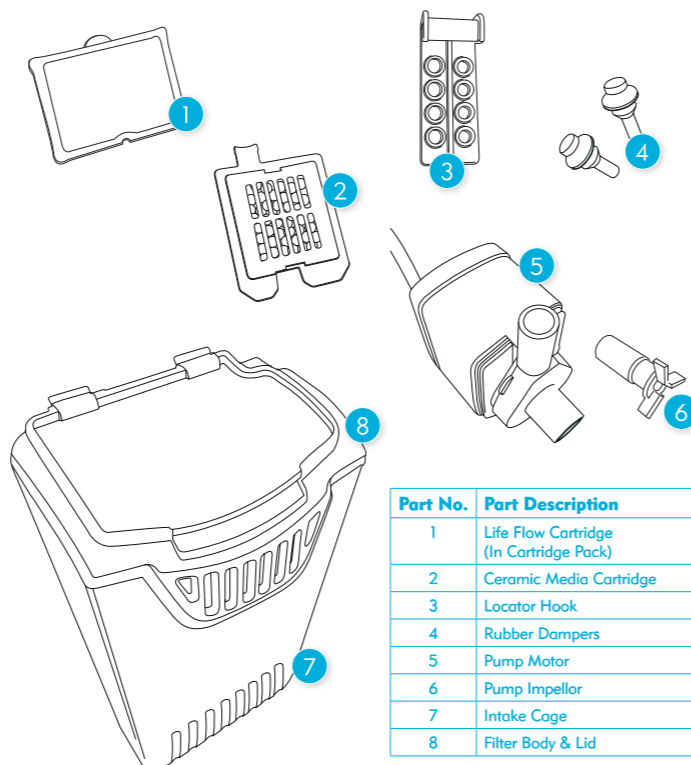
- A. Aquariums are a closed system and any waste or dirt produced by fish and plants remains in the water.
- B. The filter will need to become a waste processing plant by trapping dirt, processing fish waste and removing algae food to prevent algae growth.
- C. The Interpet internal power filter has five unique stages to combat the waste in the aquarium.

Effective five stage filtration:

- 1 "Max Life" Media - creates healthy water by acting as a home for essential bacteria which remove toxic fish waste
- 2 Dual sided mechanical floss - Clears water by trapping fine waste
- 3 Activated carbon - Purifies water by removing dyes, toxins, heavy metals and odours
- 4 "Phosphate remover spheres" - Reduce unsightly algae by removing phosphate, algae's favourite food
- 5 Oxygenated - clear and healthy water returns to the aquarium



2. PART CHECKS



Part No.	Part Description
1	Life Flow Cartridge (In Cartridge Pack)
2	Ceramic Media Cartridge
3	Locator Hook
4	Rubber Dampers
5	Pump Motor
6	Pump Impellor
7	Intake Cage
8	Filter Body & Lid

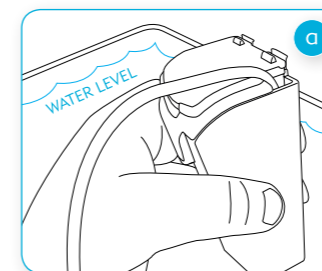
QUESTIONS OR SPARE PARTS, VISIT www.interpetlife.com

3. INSTALLING YOUR FILTER

WARNING: Make sure the filter is mounted on the tank securely before plugging it into an electrical power source.

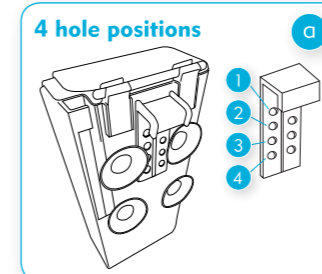
USING SUCKERS

- a. Using installed suckers on filter body, push fit onto inside of the aquarium glass. Note: Position using the max water level guide printed on the filter.

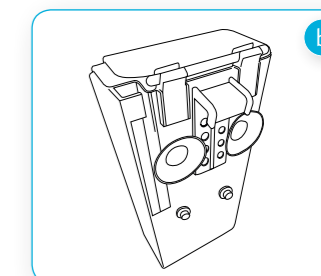


USING HOOK

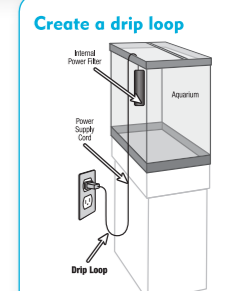
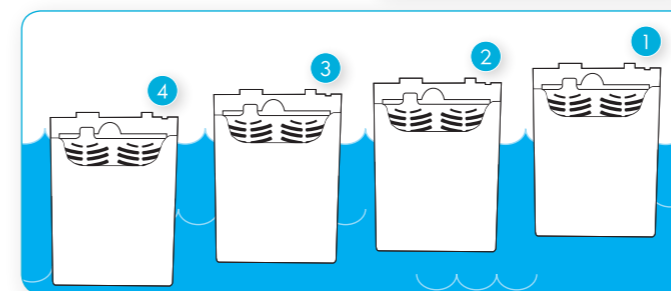
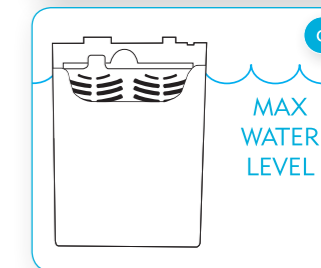
- a. Or to attach directly to aquarium rim. Attach locator hook to filter body. Note: 4 hole heights available for higher or lower positions.



- b. Remove bottom two suckers and replace with supplied rubber dampers (4). This minimises vibration noise.



- c. Attach filter directly onto the aquarium rim. Position using "max water level" guide printed on filter. If above "max water level" change hook position (see a).



Important safety information

To prevent any drips entering electrical socket, create a drip loop for the filter cable.

4. MAINTENANCE ROUTINE

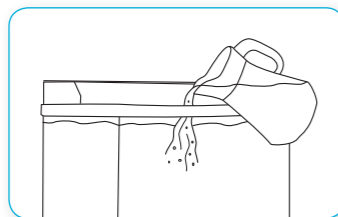
A. Daily care

- Ensure the filter is working correctly
- Check flow
- Check cartridge (1) is not blocked (water flowing over the top of it)



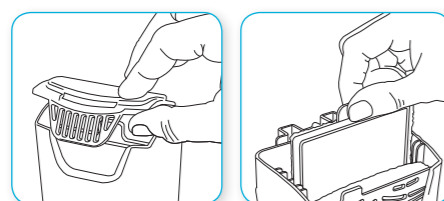
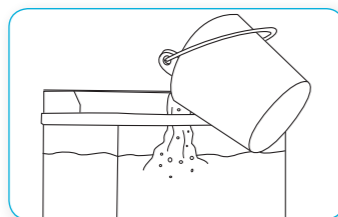
B. Weekly care

- Top up any water evaporation in the aquarium



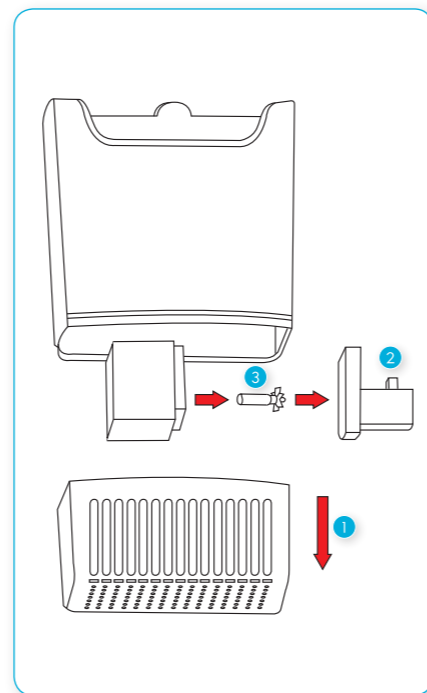
C. Monthly care

- Conduct a 25% water change
- Replace life flow cartridge (1)



D. 3 Monthly care

- Remove intake cage (1), motor cover (2) & impellor (3), clean in freshwater



E. Annual care

- Replace impellor (3)

5. TOP TIPS FOR A HEALTHY AND SUCCESSFUL AQUARIUM

1. Select the correct number and correct species of fish for a balanced community.
2. Care for your water; do recommended water changes, filter cleaning, water testing and take special care when adding new fish.
3. Don't rush the early days, start slowly and carefully for long term success.
4. ENJOY YOUR AQUARIUM!
5. See online for further information on all aspects of keeping an aquarium and fishkeeping at www.interpetlife.com.

If you are starting a new aquarium, go to www.interpetlife.com for detailed information and support on correctly introducing fish, water changes and testing your water quality.



NEED HELP?

To ensure aquarium success visit our website for support, advice and helpful top tips on our products and fishkeeping.

Interpet

LIFECare SUPPORT

www.interpetlife.com

ALWAYS TURN OFF POWER TO YOUR FILTER WHEN CARRYING OUT MAINTENANCE